



Instantaneous Coupling

2 1/2 INCH INST (BS336):

The 2 1/2" Instantaneous coupling system is used for a variety of water delivery applications to connect hoses together and to other pipework and fittings.

It comprises of a male and female two part connection which are held securely in position by two internal spring loaded plunger mechanisms in the female half which lock in place behind a raised lip on the male half. Both plungers must be fully retracted to allow separation of the two parts.

Water flow is normally from the female half into the male half. The hose tails have a double rib arrangement which facilitate wire binding or hose clamps.

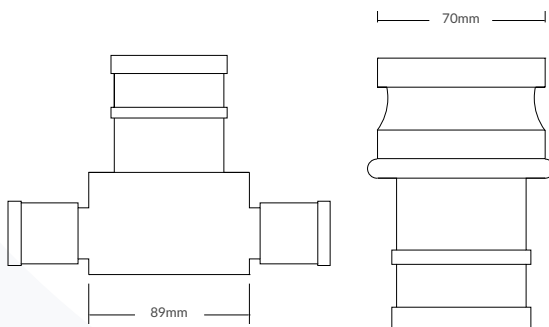
1 1/2 INCH INST (FETA):

The 1 1/2" Instantaneous system to FETA Standard is only available with 38mm hose tails.

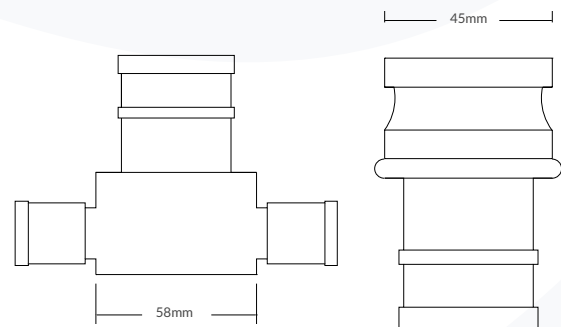
PRESSURE RATING: 16 Bar working pressure

MATERIALS: Aluminium
 Stainless Steel
 Gun Metal
 Anodised Aluminium
 Chromium Plated Gun Metal

Weight per Pair (gms)			
Size (mm)	Tail (inch)	Aluminium	Gun Metal
64	1/2	80	N/A
	3/4	85	N/A
	1	90	250
	1 1/2	95	280
	1 3/4	98	285
	2	99	295
	2 1/2	100	310
	2 3/4	110	315
	3	120	320
38	1 1/2	40	100



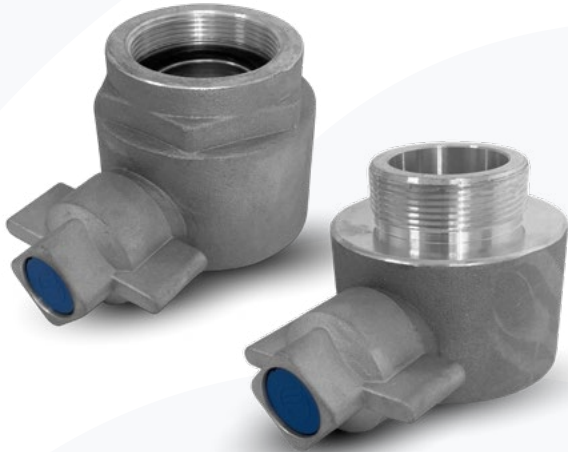
2 1/2 inch Instantaneous



1 1/2 inch Instantaneous

Instantaneous Adaptors

Instantaneous adaptors allow threaded pipework or hose connections to be converted to an Instantaneous system and can also be used to connect two differing hose system types (16 Bar).



64mm INST FEMALE x BSP THREAD

Inst	BSP Male (inch)	BSP Female (inch)
Female	¾	¾
	1	1
	1 ½	1 ½
	2	2
	2 ½	2 ½
	3	3



64mm INST MALE x BSP THREAD

Inst	BSP Male (inch)	BSP Female (inch)
Male	¾	¾
	1	1
	1 ½	1 ½
	2	2
	2 ½	2 ½
	3	3

38mm INST FEMALE x BSP THREAD

Inst	BSP Male (inch)	BSP Female (inch)
Female	1 ½	1 ½, 2

38mm INST MALE x BSP THREAD

Inst	BSP Male (inch)	BSP Female (inch)
Male	1 ½	1 ½, 2

THREAD OPTIONS:

BSP Parallel BSP Taper NPT
 BSRT NH / NST

MATERIALS:

Aluminium Anodised Aluminium
 Gun Metal Stainless Steel



BS336 Inst double ended adaptors available in male or female

Spare Washers to suit both 1 ½ and 2 ½ inch size



Instantaneous Caps & Plugs

To BS336 and FETA standard (16 Bar) blank caps and plugs are used to seal off hoses and pipework to prevent ingress of dust, insects and other foreign matter. They are available to suit both the 64mm and 38mm Instantaneous coupling sizes. Supplied with keep chains as standard.

BLANKING CAPS:

Single twist release as standard, supplied with keep chain in Aluminium or Gun Metal.

BLANKING PLUGS:

Aluminium or Gun Metal also available in Plastic .

RUBBER CAPS & PLUGS:

For use in non-pressurised applications.

PRESSURE GAUGE PLUG:

Dry or glycerine filled 80mm (3") gauge with rubber boot. Static assembly used to take static pressure at the hydrant standpipe outlet.

Dry Gauge: 14 bar as standard
16 bar on request

Glycerine Gauge: up to 30 bar



Blanking Plug



Blanking Cap



Rubber Caps & Plugs



Pressure Gauge Plug